

## The Nexus of Science and the Arts

### Alpha Chi Spring 2015 National Convention to be in Chicago

Whether we think of blowing into the Windy City or muscling our way into the City of the Big Shoulders, we're sure that when the students and chapter sponsors arrive in Chicago for the national convention March 19-21, 2015, things will begin to happen. Our headquarters will be the Sheraton Chicago Hotel and Towers, situated directly on the river in the heart of downtown, one block from Lake Shore Drive and within walking distance to such Chicago landmarks as Navy Pier, the Magnificent Mile, Millennium Park, the Art Institute, and the Loop District.

Sponsors and returning students should anticipate program and schedule adjustments this year. We've listened to your survey comments and expanded our agenda to allow both a slightly more relaxed schedule and plenty of time to enjoy convention activities and explore the city. The program begins early Thursday evening, after afternoon check-in and registration, with separate welcome sessions for students and sponsors and then a taste of Chicago reception for everyone. The Research & Creativity Forum (poster session) will follow, as well as a Performing Arts Showcase (look for a call for performers in February).



*Convention attendees will enjoy the city of Chicago while considering the theme of Harmonious Hemispheres: The Nexus of Science and the Arts.*

Student presentations will form the bulk of the Friday and Saturday morning schedules, with a couple of Saturday afternoon sessions added as well. The most significant change is that the culmination of the convention will be on Saturday evening with the keynote address and awards gala.

We'll highlight the convention theme, focusing on the interplay between creativity and the sciences, in multiple ways:

#### Our convention speakers:

Keynoter University of Buffalo professor Dr. Nnedi Okorafor, winner of the World Fantasy Award for best novel in 2011 for *Who Fears Death*, possesses an imagination the New York Times terms "stunning." Born in the U.S. to Nigerian parents, she incorporates her childhood fascination with entomology and other sciences into her children's,

*(continued on page four)*

## Pryor Fellows Lee and Cabeldue Selected

Curtis Lee, a doctoral student in civil engineering at Duke University, and Mollimichelle Cabeldue, a master's student in clinical psychology at Sam Houston State University, are the recipients of the 2014-15 Joseph E. Pryor Graduate Fellowships.

The awards, named for the society's first executive director, are given to a doctoral student who has completed at least two years of graduate study, and to a graduate student in the first or second year of study.

Lee, who received a \$5,000 stipend, is now in his fourth year of graduate study. He is a 2011 graduate of Texas Lutheran University, where he was a member of the Texas Alpha Delta chapter. Cabeldue, inducted in 2012 as an undergraduate at the University of the Incarnate Word, received a \$3,000 stipend and is in her first year of graduate study.



Curtis Lee



Mollimichelle  
Cabeldue

2015-16 Application Information  
[www.AlphaChiHonor.org](http://www.AlphaChiHonor.org)



ALPHA CHI  
NATIONAL CONVENTION  
Chicago • 2015

# 24 Students Win Fellowships and Scholarships

The Robert W. Sledge Fellowship stipend is \$3,500, the H. Y. Benedict Fellowship stipend \$2,500. Benedict alternates: 1) Holly Anderson, South Carolina Iota, Erskine College; 2) Misha Matsumoto, Hawaii Beta, Hawaii Pacific University; 3) Ashley Meadows, Texas Alpha Delta, Texas Lutheran University; 4) Justin Hawkersmith, Tennessee Delta, Carson-Newman University; 5) Lindsey Lavin, Maine Epsilon, University of New England.



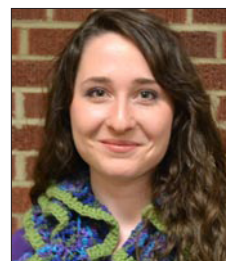
SLEDGE

Kirby Ellis  
Tennessee Delta, Carson-Newman University. Now in master's program in business administration at Carson-Newman University.



SLEDGE

Melanie Long  
Utah Alpha, Westminster College of Salt Lake. Now pursuing a Ph.D in economics at Colorado State University.



BENEDICT

Delaney Bivens  
Arkansas Eta, Harding University. Studying developmental psychology at the University of North Carolina Greensboro.



BENEDICT

Megan Bourne  
Mississippi Beta, William Carey University. Currently pursuing a master's degree in art education.



BENEDICT

Rachael Bradley  
North Carolina Zeta, Gardner-Webb University. Now attending the Gardner-Webb School of Divinity.



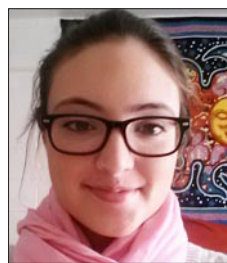
BENEDICT

Ashley Cross  
Georgia Xi, Young Harris College. Now pursuing a Ph.D. in microbiology and molecular genetics at Emory University.



BENEDICT

Anthony Fredette  
California Zeta, Fresno Pacific University. Now in the master's program in medieval studies at the University of Toronto.



BENEDICT

Charla Henley  
Virginia Delta, Roanoke College. Attending the University of New Mexico Albuquerque pursuing a master's degree in Latin American studies.



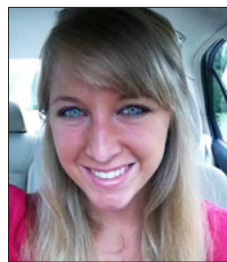
BENEDICT

Olivia Meyers  
North Carolina Omicron, Catawba College. Currently attending North Carolina State University in the College of Veterinary Medicine.



BENEDICT

Rozen Neupane  
West Virginia Epsilon, West Liberty University. Studying French linguistics at the University of Texas at Austin.



BENEDICT

Emily Petrak  
Pennsylvania Theta, Thiel College. Now a pharmacy student at Lake Erie College of Osteopathic Medicine.



BENEDICT

Crystal Taporco  
Vrbas  
Kansas Epsilon, Friends University. Currently in the physical therapy doctoral program at Wichita State University



## 2014-15 Sledge, Benedict, Gaston, and Nolle Awards Provide \$52,000 for Members' Graduate and Undergraduate Studies

The Edwin W. Gaston Scholarship stipend is \$2,500, the Alfred H. Nolle Scholarship stipend \$1,500. Nolle alternates: 1) Kristen Elia, Arkansas Iota, Lyon College; 2) Austin Kercheville, Florida Xi, Florida College; 3) Alex Hoffman, Indiana Beta, Huntington University; 4) Sarah Evans, Virginia Gamma, Bridgewater College; 5) Kayla Bowers, New Hampshire Alpha, Colby-Sawyer College.



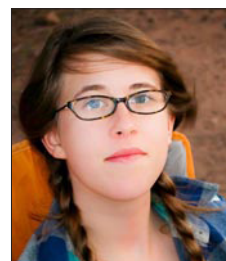
GASTON

Alexandria Pierce  
Kansas Delta, Kansas Wesleyan University. Major in biomedical chemistry.



GASTON

Pratik Raghu  
Utah Alpha, Westminster College of Salt Lake City. Major in postcolonial ethics.



Sierra Berry  
Texas Iota, Texas State University. Major in biology.

NOLLE



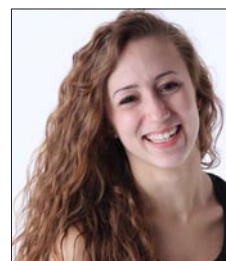
NOLLE

Elise Cade  
New York Omicron, SUNY College at Brockport. Major in chemistry and biology.



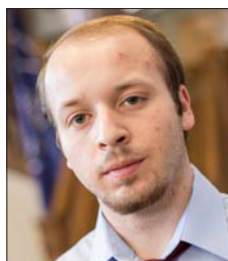
NOLLE

Carl Kornman  
Texas Alpha Xi, University of Texas at Tyler. Major in kinesiology and pre-medicine.



NOLLE

Allison Leopold  
Texas Alpha Omega, Southern Methodist University. Major in environmental engineering and math.



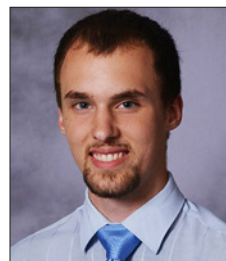
NOLLE

Corey Logsdon  
Missouri Epsilon, Columbia College. Major in graphic design.



NOLLE

Thomas Lake Moore V  
Missouri Delta, Westminster College. Major in political science and philosophy.



NOLLE

Stephen Noell  
Pennsylvania Lambda, Geneva College. Major in cell and molecular biology.



NOLLE

Jana Soares  
Texas Tau, St. Edward's University. Major in biology.



NOLLE

Dustin Walter  
Arkansas Beta, Ouachita Baptist University. Major in biology and chemistry.



NOLLE

Sarah Wolf  
Nebraska Alpha, Hastings College. Major in flute performance, music education, and secondary English education.

## Nnedi Okorafor to be Keynote Speaker

University of Buffalo professor, Dr. Nnedi Okorafor, winner of the World Fantasy Award for best novel in 2011 for *Who Fears Death* possesses an imagination the New York Times terms “stunning.” Born in the U.S. to Nigerian parents, she incorporates her childhood fascination with entomology and other sciences into her children’s, young adult, and adult fantasy and science fiction novels.

Her adult works are *Who Fears Death* (winner of the World Fantasy Award for Best Novel), her short story collection *Kabu Kabu* and her recently released science fiction novel *Lagoon*. Her young adult novels are *Akata Witch* (an Amazon.com Best Book of the Year), *Zahrah The Windseeker* (winner of the Wole Soyinka Prize for African Literature), and *The Shadow Speaker* (winner of the CBS Parallax Award). Her children’s book, *Long Juju Man*, is the winner of the Macmillan Writer’s Prize for Africa. The sequel to *Akata Witch* (*Akata Witch 2: Breaking Kola*) and Nnedi’s next adult work *The Book of Phoenix* are scheduled for release in 2015.

Earning her B.A. in rhetoric from the University of Illinois, C-U, she went on to add an M.A. in journalism from Michigan State University and her M.A. and Ph.D. in English



Dr. Nnedi Okorafor

from the University of Illinois, Chicago. She is also a graduate of the Clarion Science Fiction and Fantasy Writers' Workshop (2001). She is a professor of creative writing and literature at the University of Buffalo. Find her on Facebook, Twitter (@Nnedi) and at nnedi.com.

## Reuben Ironhorse-Kent: Alpha Chi's 2015 Distinguished Alumnus

On Friday, March 20, national convention delegates will have the opportunity to meet the 2015 Distinguished Alumnus, Reuben Ironhorse-Kent.

Inducted into the Nebraska Delta chapter at Peru State College in 2013, Reuben Ironhorse-Kent has displayed his flute-playing and artwork in venues across the country. His works have been featured in *Native American Art* by Robin Langley Sommer, *Hands In Clay – 3rd-5th Edition* (college level ceramics textbook) by Charlotte Speight and John Toki, *Creativity Is Our Tradition* – Institute of American Indian Arts-Santa Fe, and *The Ioway: The Lost Nation* by Kelley and Tammy Rundle, and have appeared in collections including the Smithsonian American Indian Art Museum, the Institute of American Indian



Reuben Ironhorse-Kent

Arts, the Heritage Museum at Pine Ridge, South Dakota, and the Southern Plains Indian Museum. He is a member of the Iowa Tribe of Kansas and Nebraska.

March 19-21, 2015  
AX National Convention

(from page one)

young adult, and adult fantasy and science fiction novels.

Distinguished Alumnus Reuben Ironhorse-Kent, graduate of Peru State, is a gifted artist, with paintings and objects featured at the Smithsonian American Indian Art Museum as well as several other significant collections.

### Our collaborative research project:

Students will again be challenged this year to create collaborative teams to explore the intersection between science and art. Teams will craft projects using original and secondary research in psychology, painting, bioethics, chemistry, creative writing, history, music, sociology, and other academic disciplines in pursuit of new knowledge. There's a \$5,000 prize to the winning team!

### The national service project:

Each year at the convention we conclude the year-long emphasis on extending our scholarship beyond the walls of the classroom, lab, or studio. This year's project, providing art supplies for Art Therapy Connection of Chicago and science supplies for public school classrooms, will allow convention-goers first-hand experience in making scholarship effective for good.

Full details for planning your chapter's participation this year are now posted online. The Convention Information Packet contains items to help you with housing, registration, national travel and housing grants, presenter info and prizes, and the national service project. We anticipate a record crowd, making Chicago our kind of town, as we share and learn the results of academic effort, renew and begin valued professional relationships, and explore new ways to make Alpha Chi's ideals our ideals in scholarship and in service.

### Reader Alert

More details on the upcoming convention in Chicago and applying for scholarships and fellowships for the 2015-16 academic year can be found on the website at [AlphaChiHonor.org](http://AlphaChiHonor.org).



Your chapter could be on the  
list for 2014-15!



### Star Chapter Criteria

A Star Chapter will fulfill the following:

- Induct and register new members
- File an Annual Chapter Report by the deadline
- Send at least one sponsor and one student to the annual national convention
- Have at least one student presentation on the annual national convention program
- Nominate a student for a national fellowship or scholarship
- Host an academic program on campus

### Notable Chapter Criteria

A Notable Chapter will achieve these benchmarks of healthy chapter life:

- Induct and register new members
- File an Annual Chapter Report by the deadline

And any three of the following:

- Send at least one sponsor and one student to the annual national convention
- Have at least one student presentation on the annual national convention program
- Nominate a student for a national fellowship or scholarship
- Host an academic program on campus

## Notable Chapters 2013-14

Angelo State University, Texas Alpha Iota  
Florida College, Florida Xi  
Friends University, Kansas Epsilon  
Goldey Beacom College, Delaware Beta  
Mars Hill University, North Carolina Epsilon  
Midwestern State University,  
Texas Alpha Gamma  
Missouri Valley College, Missouri Sigma  
Sam Houston State University, Texas Omicron  
The University of Texas at San Antonio,  
Texas Alpha Pi  
University of La Verne, California Theta

### AX Inductions by Region

Region	2013-14	2012-13	2011-12
I	1593	1633	2188
II	1700	2078	1738
III	2798	3912	3977
IV	960	1141	1033
V	1138	1399	1336
VI	1915	2130	1729
VII	2010	957	1453
<b>Totals</b>	<b>12,114</b>	<b>13,250</b>	<b>13,454</b>

## Star Chapters Academic Year 2013-14



Abilene Christian University, Texas Psi  
Anderson University, Indiana Alpha  
Belmont University, Tennessee Eta  
Bowie State University, Maryland Alpha  
Brescia University, Kentucky Delta  
California Baptist University, California Beta  
California State University, Bakersfield,  
California Iota  
Campbellsville University, Kentucky Lambda  
Carson-Newman University, Tennessee Delta  
Catawba College, North Carolina Omicron  
Chowan University, North Carolina Phi  
Christian Brothers University, Tennessee Theta  
Colby-Sawyer College, New Hampshire Alpha  
Columbia College, Missouri Epsilon  
East Central University, Oklahoma Gamma  
Erskine College, South Carolina Iota  
Evangel University, Missouri Rho  
Fresno Pacific University, California Zeta  
Gardner-Webb University, North Carolina Zeta  
Harding University, Arkansas Eta  
Hastings College, Nebraska Alpha  
Hawaii Pacific University, Hawaii Beta  
Huntington University, Indiana Beta  
Indiana Institute of Technology,  
Indiana Lambda  
Kansas Wesleyan University, Kansas Delta  
Lander University, South Carolina Alpha  
Lipscomb University, Tennessee Kappa  
Lyon College, Arkansas Iota  
Milligan College, Tennessee Nu  
Missouri Western State University,  
Missouri Lambda  
Ouachita Baptist University, Arkansas Beta  
Roanoke College, Virginia Delta  
Roger Williams University, Rhode Island Alpha  
Saint Vincent College, Pennsylvania Nu  
Shorter University, Georgia Theta  
St. Catharine College, Kentucky Mu  
Texas A&M University Texarkana,  
Texas Beta Alpha  
Texas Lutheran University, Texas Alpha Delta  
Texas State University, Texas Iota  
University of Arkansas at Monticello,  
Arkansas Zeta  
University of Central Arkansas,  
Arkansas Gamma  
University of Mary Hardin-Baylor, Texas Beta  
University of North Texas, Texas Eta  
University of Texas at El Paso, Texas Alpha Beta  
University of Texas at Tyler, Texas Alpha Xi  
West Liberty University, West Virginia Epsilon  
Westminster College, Missouri Delta  
William Carey University, Mississippi Beta

## From Nationwide

## HOW TO PICK A RELIABLE BODY SHOP

### Brought to you by Nationwide Insurance®

The only thing nearly as unfortunate as a car accident is a bad experience at a body shop. You're placing the keys (and your faith) in the hands of a business that could keep your vehicle for far longer than you expect. And the resulting bill may be worthy of a bank loan. Worse yet, the results may be less than acceptable. Given the stakes, it's best to consider these factors before choosing a body shop.

**Appearance counts.** The look of a body shop is often an accurate reflection of the owner's commitment to customer service. Parking areas should be well-marked and the reception area and rest rooms should be clean. "Otherwise, look for clear signage and neatly dressed staff—all indicators of a serious operation," says Dale Delmage, a consultant with VeriFacts, which provides third-party quality-verification for the auto-collision and body shop industry. "The staff's manner also counts. If questions aren't answered promptly and courteously, then you're in the wrong place."

**Check the buzz.** In these days of ubiquitous social media, consumers have a big say in the reputation of a business, and experiences at a body shop certainly get people talking. You should especially solicit the opinions of family members and friends. "A company that has proven it constantly satisfies customers may not be the biggest or best-known in your area," says Phil Reed, senior advice editor with Edmunds.com, a leading automotive consumer site.

Nationwide is proud to partner with Alpha Chi National College Honor Society and support their mission. Find out how Alpha Chi members could save with a special discount on auto insurance. Call 1-866-238-1426 or visit [nationwide.com/AlphaChi](http://nationwide.com/AlphaChi) today!

**Gather several estimates.** It's the best way to avoid overcharges. But don't go with the lowest quote without a clear sense of what will get repaired. "An extremely low quote could mean there's something they're not doing," Reed says. Also inquire about all warranty details, such as how long it extends and what it covers. A one-year agreement is often the minimum. Make sure the shop has a proper business license, as well as professional certifications.

**Ask about materials.** You'll want to know if they're new, used or aftermarket body parts. While new and used parts are usually fine, they may come with a mark-up. "Aftermarket parts can save a lot of money and can be just as good as the ones from the original manufacturer," Reed says. "And if paint work is involved, ask how many coats of paint and clear coat the shop intends to apply."

**Avoid scammers.** Beware of being approached outside a body shop by someone who notices the damage and claims they can fix it right then and there for a cut-rate price. A number of news reports have indicated that these offers are actually scams. The work involves substandard dent-filler material that looks shoddy, which then requires a trip to the body shop, incurring an extra cost. "The only way you can tell if these guys are a scam," Delmage says, "is if their lips are moving."



**Nationwide  
Insurance**



**ALPHA CHI**  
**NATIONAL CONVENTION**  
Chicago • 2015