

## Capitol Convention Promises a Capital Experience

*Where will you be the second weekend in April? We hope you'll be joining Alpha Chi at its 2016 national convention in DC/Alexandria!*

Not only will delegates find a trip to our nation's capitol exhilarating and rewarding, the Alpha Chi convention will provide a stimulating academic setting for all who attend. Student presentations, awards, and keynote speakers will fill the program, with an afternoon and evening set aside for sightseeing on your own. This year's convention theme, Transcending Boundaries, will be developed as we hear from presenters with a variety of scholarly interests and backgrounds.

Located in the West End of Historic Alexandria, Virginia, the Hilton Alexandria Mark Center hotel, is just five miles from the attractions of DC and four miles from Old Town Alexandria. This location offers a very attractive room rate, with easy access via the complimentary hotel shuttle to the King Street Metro station and Capitol attractions just a few metro stops away. Alexandria, for those already familiar with DC, boasts a historic downtown, a busy waterfront, blocks

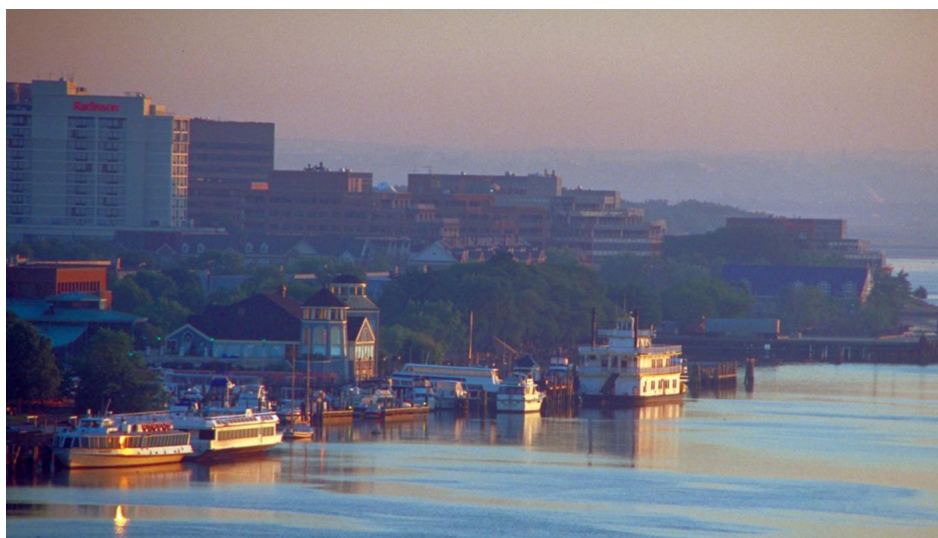


photo courtesy of Alexandria Convention and Visitors Association (ACVA)

*The DC/Alexandria area offers many historical sites and various activities for our convention attendees.*

of quaint shops, scrumptious seafood, and a bustling nightlife, all accessible via the hotel's complimentary shuttle and a free downtown trolley.

Our convention agenda this year will run from Thursday through Saturday evening. Delegates will check in to the hotel and Alpha Chi Central on Thursday afternoon with welcome events for students and faculty and a reception beginning in the early evening. The first adjudicated student presentations

begin soon after, with the poster forum, allowing ample time for continued networking as all delegates survey the scholarly efforts of Alpha Chi's student researchers.

Friday morning will be pleasantly busy. In addition to roughly 150 student presentations in two sets of concurrent sessions, each region will meet to elect new leaders and discuss topics affecting their regions. The entire convention will assemble for brunch in the ballroom to meet this year's Distinguished

Alumna, Avery Bourne. You can learn more about Rep. Bourne, a recent graduate of Columbia College, at [repbourne.com](http://repbourne.com). By early Friday afternoon, delegates will be free to explore the riches of DC and Alexandria. Group transportation to a central location to be determined (perhaps Metro Center or L'Enfant Plaza) will be arranged for delegates wanting to quickly get to the heart of DC. Later that evening, many will return to the hotel for what's become a popular addition to the convention schedule: Alpha Chi's Got Talent!

*(continued on page four)*

### Pryor Fellows Valdivia and Oliphant Selected

Monica Medel Valdivia, a doctoral student in geographic information science at Texas State University, San Marcos, Texas, and Kate Oliphant, a master's student in music performance at East Carolina University, are the recipients of the 2015 Joseph E. Pryor Graduate Fellowships.

The awards, named for the society's first executive director, are given to a doctoral student who has completed at least two years of graduate study and to a graduate student in the first or second year of study.

Valdivia, who received a \$5,000 stipend, was inducted in 2014 at Texas State University, Texas Iota chapter. Oliphant inducted in 2012 as an undergraduate at Gardner-Webb University, received a \$3,000 stipend and is in her first year of graduate study.



Monica Medel Valdivia



Kate Oliphant

2016 Application Information  
[www.AlphaChiHonor.org](http://www.AlphaChiHonor.org)

## 24 Students Awarded Fellowships and Scholarships

The Robert W. Sledge Fellowship stipend is \$3,500, the H. Y. Benedict Fellowship stipend \$2,500. Benedict alternates: 1) Johnnie Sue Huddleston, Tennessee Theta, Christian Brothers University; 2) Randi Berkovsky, Texas Iota, Texas State University; 3) Patricia Suchan, North Carolina Nu, High Point University; 4) Josiah Augustine, Tennessee Zeta, Lee University; 5) Ethan Hillman, Indiana Alpha, Anderson University.



**Laura Kate Gonyea**  
Tennessee Delta, Carson-Newman University. Now in master's program in communication at North Carolina State.  
**SLEDGE**

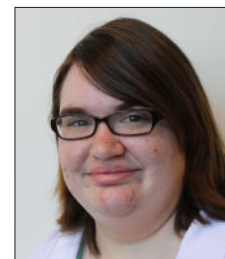


**Ana Martin**  
Georgia Theta, Shorter University. Currently pursuing a Ph.D in political science at Georgia State University.  
**SLEDGE**



**Mark Alex Carver**  
Tennessee Delta, Carson-Newman University. Now pursuing a J.D. at Vanderbilt School of Law.

**BENEDICT**



**Jessica Hauschild**  
Kansas Delta, Kansas Wesleyan University. Currently majoring in statistics at the University of Nebraska-Lincoln, master's program.

**BENEDICT**



**Madison Jupitz**  
Hawai'i Beta, Hawai'i Pacific University. Now in the master's program in biology at East Carolina University.

**BENEDICT**



**John Keller**  
Tennessee Beta, Union University. Pursuing a master of divinity at Southern Baptist Theological Seminary.

**BENEDICT**



**Ekaterina Kruglov**  
North Carolina Omicron, Catawba College. Master's program in engineering mathematics at KTH Royal Institute of Technology.

**BENEDICT**



**Erin Puskar**  
Virginia Iota, Shenandoah University. Major in performing arts leadership and management, master's program.

**BENEDICT**



**Suravi Shrestha**  
Missouri Delta, Westminster College. Pursuing a master's degree in atmospheric sciences at the University of Illinois Urbana Champaign.

**BENEDICT**



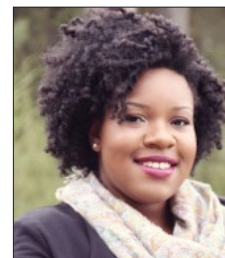
**Bryan Stearns**  
Missouri Pi, Lindenwood University. Pursuing a Ph.D. in computer science with focus on artificial intelligence.

**BENEDICT**



**Mackenzie Sullivan**  
Virginia Delta, Roanoke College. Now studying at the University of Virginia School of Medicine.

**BENEDICT**



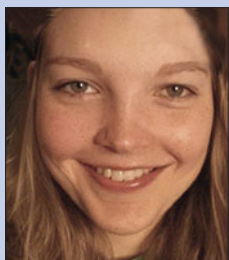
**April Wright**  
Arkansas Zeta, University of Arkansas at Monticello. Pursuing a master of arts degree in teaching.

**BENEDICT**



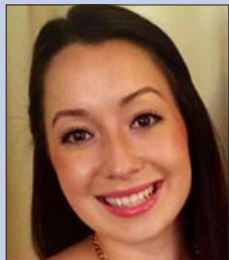
## 2015 Sledge, Benedict, Gaston, and Nolle Awards Provide \$52,000 for Members' Graduate and Undergraduate Studies

The **Edwin W. Gaston Scholarship** stipend is \$2,500, the **Alfred H. Nolle Scholarship** stipend \$1,500. Nolle alternates: 1) Christiane Miller, California Zeta, Fresno Pacific University; 2) Amanda Dicks, Indiana Lambda, Indiana Institute of Technology; 3) Kirstin Shields, Oklahoma Gamma, East Central University; 4) Ansley Ricker, North Carolina Epsilon, Mars Hill University; 5) Robbi Riggs, Arkansas Iota, Lyon College.



**Kathleen Burris**  
North Carolina Omicron,  
Catawba College. Major  
in psychology.

GASTON



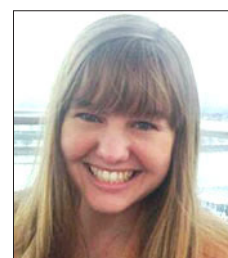
**Sophia Hackney**  
Oklahoma Eta, Oklahoma  
City University. Major in  
cell and molecular  
biology.

GASTON



**Jessica Chellsen**  
Utah Alpha, Westminster  
College of Salt Lake City.  
Major in neuroscience.

NOLLE



**Sarah Geil**  
Georgia Theta, Shorter  
University. Major in English  
and psychology.

NOLLE



**Clarissa Hunter**  
Indiana Beta, Huntington  
University. Major in  
communication studies.

NOLLE



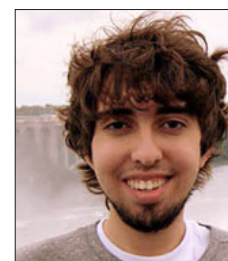
**Sarah Lynch**  
North Carolina Zeta,  
Gardner-Webb University.  
Major in history.

NOLLE



**Laura Mixon**  
Tennessee Nu  
Milligan College. Major in  
vocal performance.

NOLLE



**Nathan Nieman**  
Indiana Alpha, Anderson  
University. Major in  
computer science and math.

NOLLE



**Madison B. Peregoy**  
North Carolina Xi, Greens-  
boro College. Major in  
biology.

NOLLE



**Jackson Petty**  
Arkansas Eta, Harding  
University. Major in  
chemistry.

NOLLE



**Jeremy Schmoyer**  
Pennsylvania Kappa,  
University of the Sciences.  
Major in biochemistry.

NOLLE



**Zaca Wilson**  
Texas Alpha Eta, Wayland  
Baptist University. Major in  
religion.

NOLLE

## Pulitzer Prize-Winning Journalist to Keynote



Sonia Nazario

Sonia Nazario is best known for *Enrique's Journey*, a series of Los Angeles Times articles later expanded into a best-selling book, which explores the story of unaccompanied Latin American children immigrating to join their families in the United States. Of researching this wrenching tale, she states, "It was hard to talk to women in Mexico, on their way to the United States, who had just walked away from children, sometimes babies. Or to interview a girl who had been gang raped the previous day along the rails. Or speak with a boy who had just lost a leg to the train. My mission was to chronicle what this journey was like for these children and to do it to the best of my abilities. To take readers inside this world, to

explain. But watching these human dramas unfold before my eyes, often left me feeling inadequate and useless" ([enriquesjourney.com](http://enriquesjourney.com)). *Enrique's Journey*, adopted by more than 75 universities as a first-year or common read, will be Alpha Chi's first winter read in 2016. Nazario will sign copies of her work at the convention in Alexandria in April.

Reared partially in the U.S. and partially in Argentina, Nazario completed her undergraduate work at Williams College and received a master's degree in Latin American studies from the University of California, Berkeley. Mount St. Mary's College and Whittier College bestowed honorary doctorates. She is a celebrated activist and speaker, has testified before the U.S. Congress, and spoken at more than 150 universities, high schools, and conferences. She is at work on her second book.

## Avery Bourne Alpha Chi's 2016 Distinguished Alumna



Avery Bourne

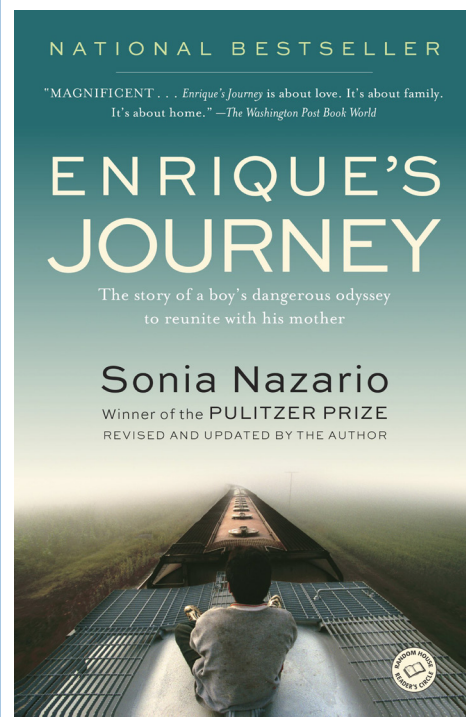
Nominated by the chapter at Columbia College in Columbia, Missouri, where she was inducted into Alpha Chi in 2012, Avery Bourne carries the distinction of being the youngest recipient of this award. A stellar American Studies undergraduate scholar, she was accepted into law school at Washington University; however, as Dr. Tonia Compton, Columbia College chapter sponsor writes, "It is the combination of academic excellence and service to her community that truly make her worthy of the distinguished alumni award. Avery committed to a career of public service long before she arrived at Columbia College." Ms. Bourne's dedication to public service led her to the unusual decision to suspend

her legal education to accept a unanimous appointment in February 2015 to the 95th District of the Illinois House of Representatives.

Since being sworn in at age 23, the youngest member of the Illinois legislature, Ms. Bourne ([repbourne.com](http://repbourne.com)) has already seen her first piece of legislation signed into law. In an interview for Reboot Illinois, she offered, "... my generation as a whole is a lot less partisan. I'm able to look at things from the perspective of we just want government to work. We just want government to allow an environment where we can get a job. And I think that I'm not entrenched in any of it. I don't owe any of my previous experience to anyone, and I can look at it with fresh eyes and say, "It doesn't matter that this is how we've always been doing it, if we need to do it a different way, then we need to do it a different way." Students and faculty alike will appreciate hearing from this young alum during the Distinguished Alumna Award session.

(Capitol Convention continued from page one)

We'll be up and at it early on Saturday, beginning with coffee and a light breakfast snack as we gather by region for networking and to announce any regional news developed during the convention. Up to 250 more students will deliver research and creative presentations throughout the day; in addition all delegates will attend important sessions devoted to strengthening chapters on local



campuses. The convention will conclude with a dinner, keynoted by Pulitzer-winner Sonia Nazario. Best known for her work *Enrique's Journey*, her address will weave together the many strands of the convention theme Transcending Boundaries. Students also anticipate the many awards announced at the final gala, which always create a high note. We hope all chapters will make plans to join us in DC/Alexandria for the annual convention April 7-9, 2016. It's a capital idea!

### AX Inductions by Region

Region	2014-15	2013-14	2012-13
I	1626	1593	1633
II	1601	1700	2078
III	2536	2798	3912
IV	1036	960	1141
V	883	1138	1399
VI	1916	1915	2130
VII	918	2010	957



*Your chapter could be on the list for 2015-16!* ★

### Star Chapter Criteria

A Star Chapter will fulfill the following:

- Induct and register new members
- File an Annual Chapter Report by the deadline
- Send at least one sponsor and one student to the annual national convention
- Have at least one student presentation on the annual national convention program
- Nominate at least one student for a national fellowship or scholarship
- Host an academic program on campus

### Notable Chapter Criteria

A Notable Chapter will achieve these benchmarks of healthy chapter life:

- Induct and register new members
- File an Annual Chapter Report by the deadline

And any three of the following:

- Send at least one sponsor and one student to the annual national convention
- Have at least one student presentation on the annual national convention program
- Nominate at least one student for a national fellowship or scholarship
- Host an academic program on campus

## Notable Chapters 2014-15

Dominican University, Illinois Kappa  
East Texas Baptist University,  
Texas Alpha Zeta  
Erskine College, South Carolina Iota  
Faulkner University, Alabama Delta  
Greensboro College, North Carolina Xi  
Lipscomb University, Tennessee Kappa  
Oklahoma City University, Oklahoma Eta  
Peru State College, Nebraska Delta  
University of Central Arkansas,  
Arkansas Gamma  
Waldorf College, Iowa Iota



## Star Chapters Academic Year 2014-15

Abilene Christian University, Texas Phi  
Anderson University, Indiana Alpha  
Angelo State University, Texas Alpha Iota  
Belmont University, Tennessee Eta  
California Baptist University, California Beta  
California State University, Bakersfield,  
California Iota  
Campbellsville University, Kentucky Lambda  
Carson-Newman University, Tennessee Delta  
Catawba College, North Carolina Omicron  
Chowan University, North Carolina Phi  
Christian Brothers University,  
Tennessee Theta  
Clearwater Christian College, Florida Theta  
Columbia College, Missouri Epsilon  
East Central University, Oklahoma Gamma  
Evangel University, Missouri Rho  
Freed-Hardeman University, Tennessee Iota  
Fresno Pacific University, California Zeta  
Gardner-Webb University,  
North Carolina Zeta  
Goldey-Beacom College, Delaware Beta  
Harding University, Arkansas Eta  
Hastings College, Nebraska Alpha  
Hawaii Pacific University, Hawaii Beta  
Huntington University, Indiana Beta  
Indiana Institute of Technology,  
Indiana Lambda  
Kansas Wesleyan University, Kansas Delta  
Lander University, South Carolina Alpha  
Lindenwood University, Missouri Pi  
Long Island University, Brooklyn,  
New York Sigma  
Lyon College, Arkansas Iota  
Midwestern State University,  
Texas Alpha Gamma  
Milligan College, Tennessee Nu  
Missouri Valley College, Missouri Sigma  
Missouri Western State University,  
Missouri Lambda  
Ouachita Baptist University, Arkansas Beta  
Shenandoah University, Virginia Iota  
Shorter University, Georgia Theta  
Southern Methodist University,  
Texas Alpha Omega  
St. Catharine College, Kentucky Mu  
Texas A&M University – Texarkana,  
Texas Beta Alpha  
Texas Lutheran University, Texas Alpha Delta  
Texas State University, Texas Iota  
University of Arkansas at Monticello,  
Arkansas Zeta  
University of Mary Hardin-Baylor, Texas  
Beta  
University of North Texas, Texas Eta  
University of Texas at El Paso,  
Texas Alpha Beta  
University of Texas at Tyler, Texas Alpha Xi  
West Liberty University, W. Virginia Epsilon  
Westminster College, Missouri Delta  
William Carey University, Mississippi Beta



*Forty-five students presented their research at a poster session sponsored by the Tennessee Theta chapter at Christian Brothers University. Academic events, such as this one, are an encouragement to student members and could put your chapter on track for a Star Chapter or Notable Chapter award.*

**Nationwide<sup>®</sup>**  
**Insurance**

**START SAVING**

**EXCLUSIVE  
MEMBER  
DISCOUNTS**





Megan Hart, MaryBeth Cox, Alanah Canfield, Lynette Muhwati, Nabin Shrestha, Linzi Thompson, and Kirstin Shields who served East Central University's Oklahoma Gamma chapter as officers in 2014-15. Being active with your chapter offers opportunities for leadership and service.

# Alpha Chi

## 2016 NATIONAL CONVENTION

### TRANSCENDING BOUNDARIES

