

# ALPHA CHI NEWSLETTER

ALPHA CHI—THE NATIONAL COLLEGE HONOR SOCIETY FOR ALL FIELDS—WWW.ALPHACHIHONOR.ORG

## Alpha Chi to Rock Cleveland at 2019 Convention!



*Cleveland offers many interesting sights and various activities for our convention attendees.*

Within sight of the Rock & Roll Hall of Fame and beautiful Lake Erie, the national convention in Cleveland is where Alpha Chi members and chapter advisors will gather April 4-6, 2019. The Hilton Cleveland Downtown will be the hub from which Alpha Chi's national convention attendees will meet in Ohio for a three-day experience of academic and creative presentations, workshops designed to strengthen chapter life and foster leadership experiences, and inspiration from speakers from both within and outside the Alpha Chi community.

This year's theme is simple: #AXRocks! For those who've never watched The Drew Carey Show which ran for nearly a decade in the late 90s, you might want to search for the infamous opening credits musical montage. We're counting on more than 400 delegates to bring that energy back to CLE!

Approximately 300 students will make presentations this year—some their first such presentation at a national conference. One thing that makes Alpha Chi conventions so unique is that nearly every academic discipline you can imagine will be presented. In fact, more than 27 academic fields carry presentation prizes that have been endowed by and on behalf of Alpha Chi members and special friends of the society over the last decade.

Attendees will get to hear from two people who have had both interesting and inspirational lives and careers. Dr. Shivraj Sohur grew up in Espérance Trébuchet, on



Dr. Shivraj Sohur

the Indian Ocean island of Mauritius. As an undergraduate in Texas, his exemplary grades and hard work earned him the honor of membership in Alpha Chi. This year, thanks to recognition by his Alpha Chi chapter at Angelo State University, he is being presented with Alpha Chi's Distinguished Alumni Award. Dr. Sohur currently works at Alkermes Inc. Research and Development where he is helping conduct clinical trials in neuropsychiatric disorders. He is also the founding president of the 5-2035 Global Foundation for Community Health whose mission is to decrease the high rate of type II diabetes in Mauritius to only 5 percent prevalence by the year 2035. Its goal is to empower communities to work together with experts and the government in the fight against chronic

non-communicable disease (CNCD). The hope is to facilitate a health care revolution in Mauritius through integrated health care as a model for the world.

Our other speaker, a Clevelander himself, Dr. Raymond Onders, is a doctor and dreamer who has invented an incredible, life-changing device. In layman's terms, it's a pace-maker for the diaphragm that is improving the quality of life for patients who've suffered paralysis



Dr. Raymond Onders

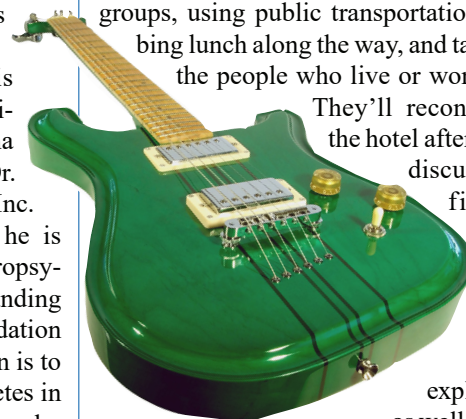
below the neck and are seriously limited by a life on ventilators. He'll share with us how his medical practice and research found him breathing life into a medical device that literally helps others to breathe.

To encourage adventurous delegates on Friday afternoon, National Council member and chapter sponsor Dr. Teddi Deka created our own City as Text® Exploration of Cleveland. Delegates can choose one of four Cleveland neighborhoods to visit in small groups, using public transportation, grabbing lunch along the way, and talking to the people who live or work there.

They'll reconvene at the hotel afterward to discuss their findings with others who went on their exploration, as well as those

who went to the other sites. Discussions will recreate the "vibe" of the city, including its people, triumphs, difficulties, and mood.

*(continued on page two)*





(from page one)

And lest we forget that all Alpha Chi members are charged with making their “scholarship effective for good,” chapters have had the opportunity all year to raise funds and collect books for Reading Is Fundamental (RIF.org). A select group of delegates will be chosen to visit a local elementary school to read those books directly to the children of Cleveland on Friday afternoon.

Alpha Chi has been looking forward to the Cleveland convention for several years now, and we hope your chapter is making plans to be there. Don't forget that generous grants for travel and housing are provided by both Alpha Chi's national headquarters and your chapter's region. In most cases, nearly full funding can be obtained for one advisor and one student presenter from each collegiate chapter. Speak with your chapter advisor if you're interested. We promise it to be an opportunity you will never forget.

## Aletheia News

The student response to the launch in 2017 of *Aletheia*, Alpha Chi's peer-reviewed journal of undergraduate scholarship, was tremendous.

The editorial staff has, as of summer 2018, received and managed the review of over 200 submissions from a wide variety of academic disciplines. To manage this influx of submissions, the editorial staff has



Dr. Kathi Vosevich

grown to include the addition of a copy editor and the Editorial Review Board.

In the fall of 2018, we announced the addition of a second editor, Dr. Kathi Vosevich, the faculty sponsor of the Georgia Theta chapter at Shorter University, who was selected after a national search. *Aletheia* Editor Dr. Tim Lindblom stated that, “Dr. Vosevich's expertise in the arts and humanities, as well as her dedication and long-standing service to the Society, will add to our ability to process and manage the growing number of submissions to the journal. We look forward to Dr. Vosevich's leadership and to continued expansion and growth of the journal and publishing the exceptional work of Alpha Chi's undergraduate members.” To access the latest issues of *Aletheia*, visit [AlphaChiHonor.org/Aletheia](http://AlphaChiHonor.org/Aletheia).

## Lara Noah Named Next Executive Director



Lara Q. Noah, Executive Director

Behind each milestone and achievement of Alpha Chi over the last two decades—the professional conferences, the increased chapter support role of the national office, the transition to online member registration, and the move to Capitol Avenue in Little Rock—Lara Noah has played a central role in Alpha Chi's successes. So it was not surprising when her application for executive director this past June was welcomed by the National Council.

To the Council, her work as the long-time director of operations has proven exemplary. Her promotion in September, then, as Alpha Chi's new executive director was a natural choice. And what makes her selection so satisfying to those in the organization is that she possesses such dedication and deep institutional knowledge of the organization.

For 25 years Noah has lived and breathed this honor society. Her work with Alpha Chi began in January 1994, just after graduation from Harding University. “Alpha Chi was looking for someone to start computerizing their paper membership records,” says Noah. She set up the organization's first database, inputting thousands of permanent registration cards, records that go back to 1922. “It was only supposed to be a temporary job,” she says. But pretty soon she was part-time office support—mailing supplies and certificates to chapters, running an email listserv, and eventually managing the accounting program. In 1995, Noah would become Alpha Chi's first full-time employee.

Lara grew up in a family that prized education. Her mother was an elementary school teacher, and her father used his master's degree as a public high school administrator. “It was assumed that my sisters and I were to receive good grades. If we didn't bring home a report card with straight As, there was a lot of explaining to be done,” she laughs. Going on to college was also just a given. She attended Harding University and majored in vocal music. She still remembers receiving her Alpha Chi invitation from the Harding sponsor and then a congratulatory letter signed by Dennis Organ, a Harding professor who would later become executive director of Alpha Chi as well as Lara's mentor for almost twenty years.

“I didn't understand what a great honor it was at first,” she says. “As soon as I learned that not just anyone was invited, that only the top 10 percent were, I wrote the check to send with my permanent registration card (in triplicate) and joined Alpha Chi.”

“I've always been a people person,” says Noah. “I've been so fortunate to work with some amazing people at Alpha Chi over the years, and I love hearing their Alpha Chi experiences and stories.” She herself has a good one about her induction ceremony. “It was the early 90s when big hair was the fashion, and we used a lot of hairspray to get it that way,” she recalls. Each new inductee walked across the stage, with candle freshly lit, to take their place on the risers. “I'm sure something important was being said, but all

I could think about was trying not to catch anyone's hair on fire!"

Noah's extroverted personality has endeared her to the many Alpha Chi sponsors over the years. This culminated during the 2018 convention in Portland. The entire organization—led by the faculty sponsors—honored Noah for nearly 25 years of service with a robust standing ovation. It's this sense of family and community that has kept Noah ensconced at Alpha Chi all these years. "My first national convention in 1995 was like putting faces on a hundred distant pen pals," she says. As much as the convention planning consumes her time, she remains a fan. "It's an amazing thing to visit a big city you've never seen before but to get to do so with your Alpha Chi family who you only get to see in person once a year," she says. "It's like Homecoming."

As the new executive director, Noah assumes a role held by only a dedicated few. Until 1994, Dr. Joe Pryor led Alpha Chi largely on a volunteer basis. A larger-than-life figure in the history of Alpha Chi, Dr. Pryor managed Alpha Chi's central office from his science faculty office, his provost office, and his home. Noah can still remember working with Dr. Pryor in her first year with Alpha Chi. "When we helped him move, I found stacks of blank registration cards, certificate requisition forms, and hand-packed boxes of lapel pins covering Dr. Joe and Bessie Mae's family piano. He was absolutely one of a kind," she says.

For nearly 70 years, Alpha Chi was a labor of love, an organization run on the

steam of volunteer chapter sponsors and elected regional and national officers. Board members met face to face once a year at a regional or national meeting. Dedicated professors—committed to the mission of fostering undergraduate scholarship—managed the scholarship competitions and planned conferences in their off hours. As Dr. Pryor saw his retirement approaching, he turned to Harding's English department chair, Dr. Dennis Organ, who had also served since the 70s as editor of Alpha Chi's publications. Dr. Organ started shadowing Dr. Pryor, and together they secured two offices on Harding's campus solely for Alpha Chi's use, and the executive officers joined Pryor and Organ to cut the ribbon opening Alpha Chi's national office in 1992.

Just a few years later, Lara joined the office staff. "I worked with Dennis for 18 of the 25 years I've been with Alpha Chi," she says. "Working with him was by far my strongest professional influence. Like Dr. Joe, Dennis had high standards for Alpha Chi. I learned from the best," she says. Organ and Noah made quite a team. Yet the two were polar opposites in some ways. Dennis was quiet and calm with a dry sense of humor and gentlemanly mannerisms. Noah is boisterous, quick to tell a story, and totally extroverted. Together, this odd couple set about the task of professionalizing the organization and carrying Alpha Chi into a bold new future.

Today Alpha Chi has its offices in Little Rock, Arkansas, with four full-time employees—a far cry from the days in Dr. Pryor's living room. When Noah started



April 4-6, 2019

working with Alpha Chi, 200,000 students from the top ten percent of their classes belonged to the organization. Fast forward 25 years, and Lara will proudly tell you that Alpha Chi membership has now reached the half million mark, which is a lot of incredible undergraduate and graduate students being recognized and celebrated, and that is without once lowering that top ten percent qualifier for membership.

If Alpha Chi looks a little different from when Noah first set up that database some 25 years ago, so too does the state of higher education. Today's colleges and universities are undergoing radical change, a true paradigm shift. For Alpha Chi to stay relevant in this environment, it had to plan for the future and find new ways to engage with and cultivate community among today's scholars.

Two years ago Alpha Chi launched an initiative to position the society's mission to thrive in this new world of higher education, and Noah has been deeply involved in this journey. Working with the Council's strategic planning committee and outside consultants, Alpha Chi put to paper the founding principles of its true identity—the substance of the promise Alpha Chi makes to its students, sponsors, and collegiate institutions. The organization created a new branding platform, rolled out a new website, and started creating videos and writing stories that allow Alpha Chi to speak with one voice to both its members, potential members, and sponsors.

After 25 years at Alpha Chi, you can bet Noah has some ideas where she wants to lead the organization as her new tenure begins. "Alpha Chi's history is full of great men and women who not only believed in honoring and encouraging the journey of academic achievement," she says, "but they also realized the importance of shining a lamp ahead for the next generation."

"I definitely have things I'd like to see happen," Noah says. One idea hearkens back

(continued on page four)

## Exclusive savings for your love of rewards side.

As part of the Alpha Chi National College Honor Society, you may be eligible for a discount on your insurance. Plus, we offer up to 20% savings when you bundle your home and auto insurance.\*

See how we can help protect your life's many sides.

Visit [nationwide.com/AlphaChi](http://nationwide.com/AlphaChi) or call 1-855-550-9215 for more information.

Discount amounts do not apply to all coverage or premium elements; actual savings will vary based on policy coverage selections and rating factors. Nationwide has made a financial contribution to this organization in return for the opportunity to market products and services to its members. Products are underwritten by Nationwide Mutual Insurance Company and affiliates, Columbus, Ohio. Nationwide, the Nationwide N and Eagle and Nationwide is on your side are service marks of Nationwide Mutual Insurance Company. © 2019 Nationwide AFO-1106AO (06/18) 9521026





to her own time as an Alpha Chi member. When she received her invitation almost 30 years ago, she didn't really know much about the honor society. And on many campuses today that still holds true. She aims to change that.

"I want every invitee—before they ever receive an invitation—to have heard something about what Alpha Chi membership means," she says. "I know that's already the case on some of our campuses, but I want our reputation for academic excellence and integrity to precede that invitation on every campus."

While outreach will be needed to fulfill this goal, Noah sees another area for change coming from within. "In the next few years, I'd like to especially focus Alpha Chi on one of our founding principles: making scholarship effective for good," she says. It's a theme that greatly resonates with today's students. Marshalling all of Alpha Chi's intelligence and cross-disciplinary creativity toward serving others will not only reap rewards for the society but also connect with the sense of purpose so ingrained in today's college students.

This focus on scholarship for good also dispels any misperceptions that Alpha Chi is just something to put on a student's resume. Or worse, that Alpha Chi is a society built upon elitism. "I understand the seriousness of research and academic advancement—and how hard one has to work to land in the top

## Notable Chapters 2017-18

Angelo State University, Texas Alpha Iota  
Cottey College, Missouri Tau  
Cumberland University, Tennessee Lambda  
Franklin Pierce University, New Hampshire Zeta  
Goldey-Beacom College, Delaware Beta  
Southeastern Oklahoma State University, Oklahoma Theta  
University of Mary Hardin-Baylor, Texas Beta  
University of North Carolina at Pembroke, North Carolina Kappa  
Waldorf University, Iowa Iota  
Wayland Baptist, Texas Alpha Eta

10 percent of their class—but no one's bettering humanity by making someone else feel less than or inadequate because they don't have the same abilities or opportunities for academic advancement," she says. "It is my philosophy that an Alpha Chi member can be academically elite without being an elitist."

Noah takes over the reins at an inflection point for the honor society. In three years, we will be celebrating Alpha Chi's 100-year anniversary. It will be a time for celebration but also a time to forge ahead with new ideas. After a quarter century's commitment to the organization, Noah is poised to lead the way. "I feel like I was raised by Alpha Chi," she says, "and now I have a new platform from which to give back."



A view of the Research and Creativity Forum from the 2018 national convention in Portland. The upcoming convention in Cleveland will offer exciting presentation opportunities for Alpha Chi members.

## Star Chapters 2017-18



Abilene Christian University, Texas Psi  
Anderson University, Indiana Alpha  
California Baptist University, California Beta  
California State University, Bakersfield, California Iota  
Campbellsville University, Kentucky Lambda  
Carson-Newman University, Tennessee Delta  
Catawba College, North Carolina Omicron  
Chowan University, North Carolina Phi  
East Central University, Oklahoma Gamma  
Fresno Pacific University, California Zeta  
Gardner-Webb University, North Carolina Zeta  
Grand Canyon University, Arizona Alpha  
Harding University, Arkansas Eta  
Hastings College, Nebraska Alpha  
Hawaii Pacific University, Hawaii Beta  
Huntington University, Indiana Beta  
Kansas Wesleyan University, Kansas Delta  
Lindenwood University, Missouri Pi  
Lipscomb University, Tennessee Kappa  
Lyon College, Arkansas Iota  
Mars Hill University, North Carolina Epsilon  
Martin Methodist College, Tennessee XI  
Milligan College, Tennessee Nu  
Missouri Valley College, Missouri Sigma  
Missouri Western State University, Missouri Lambda  
Oklahoma Christian University, Oklahoma Epsilon  
Ouachita Baptist University, Arkansas Beta  
Robert Morris University, Pennsylvania Epsilon  
Shorter University, Georgia Theta  
Southern Methodist University, Texas Alpha Omega  
Texas A&M University, Texarkana, Texas Beta Alpha  
Texas Lutheran University, Texas Alpha Delta  
Texas State University, Texas Iota  
University of Arkansas at Monticello, Arkansas Zeta  
University of North Texas, Texas Eta  
University of Texas at Tyler, Texas Alpha Xi  
West Liberty University, West Virginia Epsilon  
Westminster College, Missouri Delta



**Abigail Hawthorne**  
Texas Alpha Omega,  
Southern Methodist  
University. Currently  
studying at Eastman  
School of Music.



**Callie Kanthack**  
Montana Gamma,  
University of Montana  
Western. Attending  
Creighton University  
School of Law.

### SLEDGE

The Robert W. Sledge Fellowship stipend is \$4,000, the H. Y. Benedict Fellowship stipend \$3,000. One earlier announced Benedict recipient was unable to accept the award: Kathleen Springer, Bridgewater College. The remaining Benedict alternates: 2) Dustin Connis, Hawai'i Pacific University; 3) Savannah Weeks, Abilene Christian University; 4) Rachel Bacon, Ouachita Baptist University; 5) Cody Ray Miller, Oklahoma Christian University.

## Interested in applying for a 2019 Fellowship or Scholarship Award?

Application information, details about the awards, award amounts, and the 2019 deadlines can be found at [alphachihonor.org](http://alphachihonor.org).

## 26 Students awarded Fellowships and Scholarships in 2018

Twenty-six members of Alpha Chi, the national college honor society, were named to receive the society's national fellowships and scholarships. The stipends for full-time fall 2018 enrollment totaled \$74,000. In 2018, the Scholarship Committee was privileged to review 59 nominations for the Sledge/Benedict Fellowships, 61 for the Gaston/Nolle Scholarships, and 27 for the Pryor Fellowships.



**Alfredo Bonilla Aguilar**  
Angelo State University,  
Texas Alpha Iota.  
Currently studying  
music at Indiana  
University.

### BENEDICT



**Alisha Escobedo**  
Missouri Epsilon,  
Columbia College.  
Currently attending  
Antioch University.

### BENEDICT



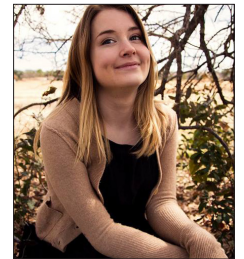
**Danielle Fincham**  
Texas Alpha Beta,  
University of Texas,  
El Paso. Attending the  
University of Nebraska  
College of Pharmacy.

### BENEDICT



**Yash Gandhi**  
Texas Alpha,  
Southwestern  
University. Now  
enrolled at Colorado  
University.

### BENEDICT



**Amelia Gayle**  
Arkansas Iota, Lyon  
College. Now study-  
ing at the University  
of Buffalo.

### BENEDICT



**Cyntanna Hawkins**  
Arkansas Beta, Ouachita  
Baptist University.  
Now enrolled at the  
Univ. of Alabama at  
Birmingham.

### BENEDICT



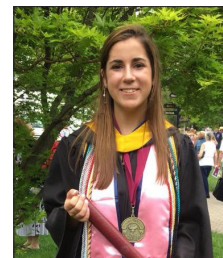
**Mallory Moore**  
North Carolina Zeta,  
Gardner-Webb Univer-  
sity. Studying humani-  
ties at University of  
Chicago.

### BENEDICT



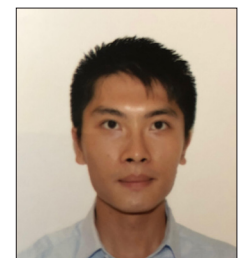
**Mark Pernik**  
Texas Kappa, Austin  
College. Studying at  
the University of Texas  
Southwestern Medical  
School.

### BENEDICT



**Caroline Peterson**  
Virginia Delta, Roa-  
noke College. Now  
studying chemistry at  
Rice University.

### BENEDICT



**Cho Fai Wong**  
California Zeta, Fres-  
no Pacific University.  
Studying mechanical  
engineering at the  
Univ. of California.

### BENEDICT





**Evan Banks**  
Missouri Lambda,  
Studying history and  
political science at  
Missouri Western  
State University.



**Daniel Glenn**  
Virginia Zeta,  
Studying political  
science at Christopher  
Newport University.

### GASTON

**The Edwin W. Gaston Scholarship** stipend is \$3,000, the **Alfred H. Nolle Scholarship** stipend \$2,000. Nolle alternates: 1) Morgan Beougher, Kansas Wesleyan University; 2) Carrie Blowe, Chowan University; 3) Alyssa Daubenschmidt, University of New England; 4) Jordyn MacDonald, Wartburg College; 5) Gabrielle Hargrove, University of Arkansas, Monticello.



**Aura Ankita Mishra**  
Purdue University gradu-  
ate student (Indiana Eta,  
University of Indianapolis)  
Pursuing a doctorate in  
human development and  
family studies.



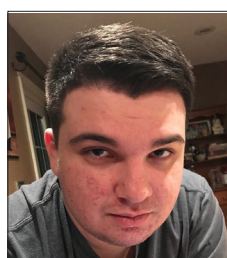
**Sofia Sedergren**  
The Graduate Center, CUNY  
graduate student (North  
Carolina XI, Greensboro Col-  
lege) Pursuing a master's in  
political science.

### PRYOR

**The Joseph E. Pryor Doctoral Fellowship** stipend is \$6,000, the **Joseph E. Pryor Master's Fellowship** stipend \$4,000. Pryor alternate doctoral: Emily Heiston, University of Virginia (Virginia Iota, Shenandoah University); Pryor alternate master's: Michelle Dufault, Maine Epsilon, University of New England.



**Shannon Clark**  
Iowa Iota, Waldorf  
University. Majoring in  
communications.



**Christopher Eli, Jr.**  
New Jersey Beta,  
Bloomfield College.  
Pursuing studies  
in media and 2D  
animation.



**Taylor Jackson**  
California Iota,  
California State Univ.,  
Bakersfield. Majoring  
in interdisciplinary  
studies.



**Carolyn Janecek**  
Utah Alpha,  
Westminster College.  
Majoring in English and  
philosophy.



**Alexander McNamara**  
Texas Alpha Omega,  
Southern Methodist  
University. Political  
science and philoso-  
phy major.

### NOLLE

### NOLLE

### NOLLE

### NOLLE

### NOLLE



**Kelsi Oldham**  
Texas Alpha Xi,  
University of Texas  
at Tyler. Majoring in  
accounting.



**Logan Owens**  
Texas Psi, Abilene  
Christian University.  
Double major in Eng-  
lish and Biblical text.



**Casey Phelps**  
Maine Epsilon, Uni-  
versity of New Eng-  
land. Applied exercise  
science major.



**David Thompson**  
Georgia Theta, Shorter  
University. English,  
communication, liberal  
arts major.



**Emily VanderBent**  
Indiana Beta,  
Huntington University.  
Majoring in history,  
a minor in museum  
studies.

### NOLLE

### NOLLE

### NOLLE

### NOLLE

### NOLLE